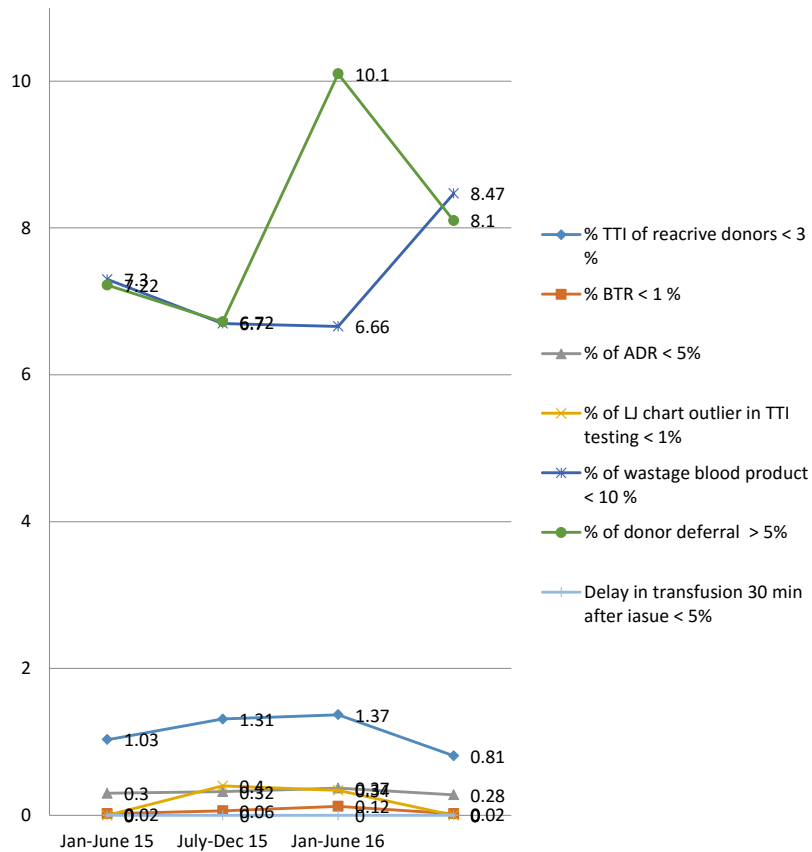


No	Quality Indicators	Benchmark	Jan-June 15	July-Dec 15	Jan-June 16	July -Dec 16
1	% TTI of reactive donors	< 3 %	1.03	1.31	1.37	0.81
2	% BTR	< 1 %	0.02	0.06	0.12	0.02
3	% of ADR	< 5%	0.3	0.32	0.37	0.28
4	% of LJ chart outlier in TTI testing	< 1%	0	0.4	0.34	0
5	% of wastage blood product	< 10 %	7.3	6.7	6.66	8.47
6	% of donor deferral	> 5%	7.22	6.72	10.1	8.1
7	Delay in transfusion 30 min after iasue	< 5%	0	0	0	0
8	TAT of blood issue	< 120 min	74	78	98	84
9	% of non confirming blood product in QC	< / = 25 %	12.07	20	9.4	21
10	% of component issue	> 80%	83.5	94	88.28	92.52

Quality Indicators: 1-7



Quality Indicators: 8-10

