

Spot1.

Q.1 Mention a name of this food grain

Q.2 Mention approximate value of calorie, protein and any one specific nutrient available from 100 grams of this food grain.

Q.3 Mention any two clinical signs or symptoms which usually occurs due to deficiency of a nutrient you mentioned above.

Spot2.

Q.1 Mention a name of the nutrient for the supplementation of which this Medicine is prescribed

Q.2 Mention approximate value of Recommended Daily Allowances of this specific nutrient for an adult healthy male

Q.3 Mention any two clinical signs or symptoms which usually occurs due to deficiency of a nutrient mentioned above.

Spot3.

Q.1 Mention a name of this food item

Q.2 Mention approximate value of calorie, protein and any one specific nutrient available from 100 grams of this food grain.

Q.3 Mention any two clinical signs or symptoms which usually occurs due to deficiency of a nutrient you mentioned above.

Spot4.

Q.1 Identify this photograph using maximum 4 words

Q.2 List at least three epidemiological factors, one from each (agent, host and environment) which are associated with causation of condition depicted in this photograph

Q.3 Give two action points for prevention and control of this condition.

Spot5.

Q.1 Mention daily calorie requirement of a healthy adult non pregnant muslim woman , house wife having moderate activity , belonged to lower socioeconomic sector and staying at lane No 6 , Rasulabad slum of Surat city. Her BMI is 27 and per capita income is 3000 rupees per month.

Q.2 Describe one physical activity using 2 messages which can be recommended to her for prevention and control of obesity.

Q.3 list two services which she can avail from government health centers under Non Communicable disease Control Program.

Spot6

Q.1 Mention daily calorie requirement of a healthy but chronic alcoholic adult agricultural labor man, having heavy physical activity, holding valid BPL card and staying at halpati falia of Vanz village field practice area. His BMI is 22 and per capita income is 1000 rupees per month.

Q.2 Describe one two health and wellness related messages which can be recommended to him for prevention and control of common diseases.

Q.3 list two services which she can avail from government health centers under any government run welfare program.

Spot7

Q.1 Write the contents of this Contraceptive

*

Q.2 Give two important messages which are required to be passed to the beneficiary lady to whom it is advised.

Q.3 Write the failure rate with its unit

Spot8

Q.1 Write the name of this Contraceptive device

Q.2 Give two important history points which must be ruled out before its insertion in the client which are required to be entered in the check list.

Q.3 Write four common side effects of this device.

Spot9

Q.1 Write the name of this Contraceptive method

Q.2 Identify the time interval in which pregnancy would not take place even after sexual intercourse.

Q.3 Write the failure rate with its unit

Spot10

Q.1 Write name of the Pneumoconiosis caused by this dust/ dust producing substance

Q.2 Name two industries where the cases of this condition occurs.

Q.3 Write two preventive and control measures for this condition

1 Spot11

Q.1 Identify this Personal Protective device

Q.2 gave two names for industry/sites where it can be used

Q.3 Name two occupational diseases which can be prevented by it.

Spot12

Q.1 List any two contents of AEFI (Adverse Eventer Following Immunization) kit maintained at vaccination sessions

Q, 2 Write names of two vaccines notorious for AEFI.

Q.3 Relate any two contents of AEFI kit with two adverse effects for which these will be used.

Spot13

Q.1 Classify this vaccine in to either Live or a Killed Vaccine.

Q, 2 where will you keep it at PHC Vans village for maintaining Cold chain?

Q.3 Mention its dose in a preterm baby having age of 6 weeks and weight of 3kg.

Spot14

Q.1 In which coloured bag/ container will you discard this Biomedical Waste item?

Q, 2 Mention its category.

Q.3 Mention its final treatment plans.

Spot15

Q.1 How will you will you discard this this solid Waste item as per Gujarat Pollution control board norms?

Q, 2 Mention its hazards to human health.

Q.3 Mention its final treatment plans.

Spot16

Q.1 Give a name for this type of chart.

Q.2 Write mode of inheritance .

Q.3 Mention two diseases having this kind of mode of inheritance.

Spot17

Q.1 Identify this insect.

Q, 2 Mention two diseases transmitted by this insect.

Q.3 Mention two measures to control diseases transmitted by this insect to humans.

Spot18

Q.1 Write the composition of powder in this sachet having WHO formula

Q, 2 Mention two messages for mother to whom you prescribed it for her child having Diarrhoea with mild dehydration.

Q.3 what will you do if a 4 year child having diarrhoea with moderate dehydration is not able to drink the solution prepared from this sachet/packet?

Spot19

Q.1 Identify this device/equipment used in Occupational Health.

Q.2 List two Pneumoconiosis for prevention of which this instrument is useful.

Q.3 Write the mechanism by which it prevents or controls the above mentioned Pneumoconiosis

Spot20

Q.1 Identify this instrument used by a Primary health care worker at village level

Q.2 what is the expected free residual chlorine level at user end? Approximately How much chlorine level is kept at water works level in sutra in ordinary situations?

Q.3 which solution is used to test measure free residual chlorine? How much amount of solution is dropped in a test tube to perform this test?

Spot21

Q.1 Identify this dose of this medicine/syrup/tablet for a 5 year old child having the deficiency of same

Q.2 List two clinical symptoms/signs related with above nutrient

Q.3 Write the name of a national health program/ campaign related with the above nutrient.

Spot22

Q.1 Identify this vector Control measure.

Q.2 List two diseases which can be controlled using this measure.

A

Q.3 Write the name of a national health program/ campaign related with the use of above measure.

Spot23

Q.1 Identify the insect which can breed in such type of a breeding place.

Q.2 List two diseases which can be transmitted by the above mentioned insect in humans.

Q.3 Write two methods to control this insect breeding in such sites

Spot24

Q.1 Identify the grade of Malnutrition by plotting weight for age on this chart: Age 18 months Weight: 8kg

Q.2 List two actions to be taken at Primary Health center level for above child.

Q.3 Write the name of a national health program/ scheme related with such a child.

An example for spots for PG exam

Spot1

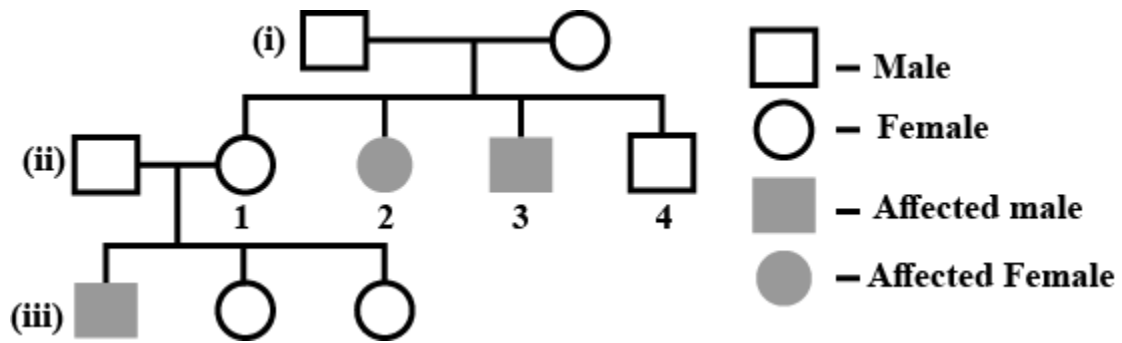
Government supplied a pack of OC Pills

Q.1 You are BHO of a block having population of one lakh with 150 eligible couples per 1000 general population and having 60% rural population and remaining urban population. Couple protection rate is 50 % and 20 percent of it is being contributed by OC Pills over last 3 years. If demography remains stable, how many such packs would be needed per year to sustain the achievements in RCH programme ?

Q.2 Consider the standard failure rate for OCP and predict the number of women who are likely to have unwanted pregnancy following use of OCP as the only method used for contraception.

Q.3 As a Community Health Physician Would you like to switch over from OCP to Injectable one for contraception ? How would you do it in your block over 5 years phase wise ?

Spot2



Q.1 Identify this pedigree and mention mode of inheritance here.

Q.2 socially and geographically stable and close communities of South Gujarat having various titles like vasava, Chaudhary, gamit, bhagat, rajvadi, bhil, kukana, pavar, deshmuKh and some more have around 50 lakhs population in south Gujarat is having a condition known as sickle cell . Will it be possible to make these communities free from sickle cell all together ? How would you do it > How long will it take to do so ?

Q.3 What will happen to quality of life of these communities if they are made free from sickle cell ?

Spot3

Q.1 List the micronutrients with which this food item can be fortified.

Q.2 Mention the need for fortifying above food items with specific nutrient(s).

Q.3 List economic and cultural factors which might inhibit community acceptance of such fortified food.

Spot5

Q.1 List names of species of various insects which can breed in this breeding place.

Q.2 List names of insecticides which may be used to control insect breeding in such sites.

Q.3 How will one can monitor such breeding sites in urban and rural areas.